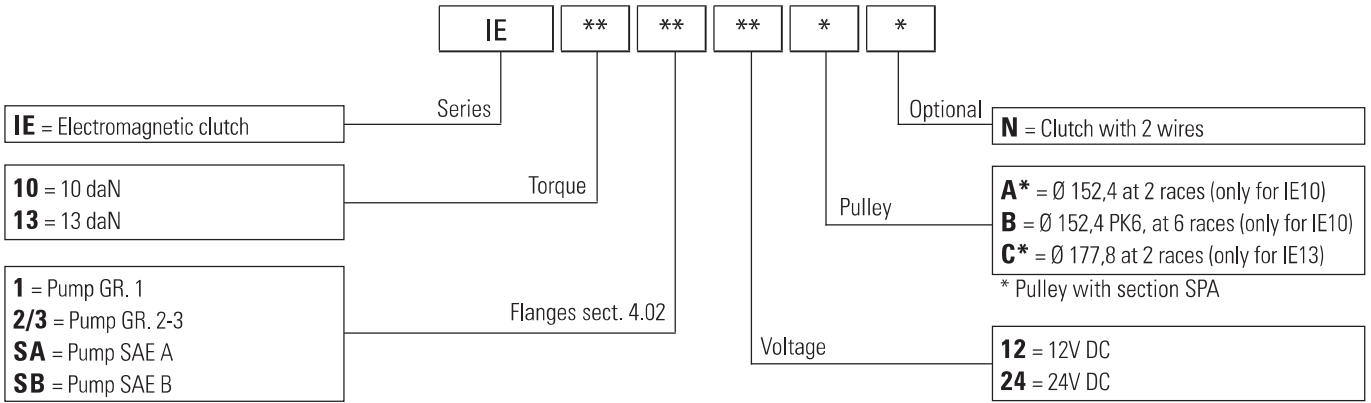
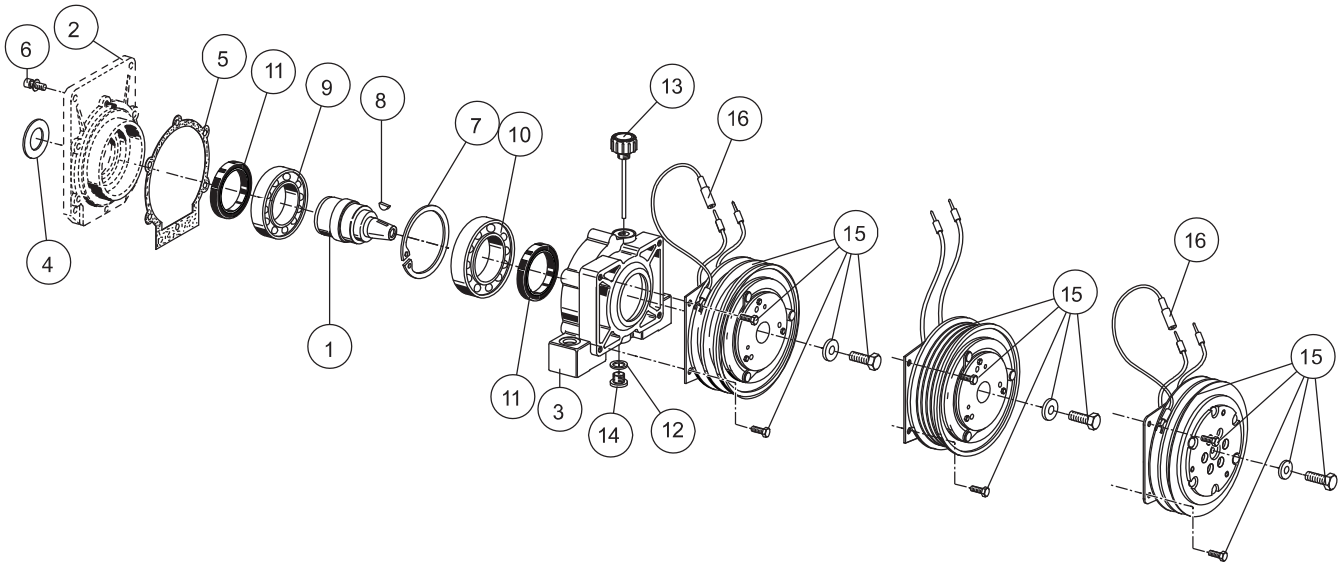


ORDERING CODE

3



SPARE PARTS



Ref.	Code	Q.ty			Description
		IE10..A..	IE10..B..	IE13..C..	
1	34241900	1	1	1	Shaft
2	—	1	1	1	Flanges (sect. 4.02)
3	39042700	1	1	1	Body
4	39101000	1	1	1	Flange D.66/25,4 (only for gr.1)
4	39101200	1	1	1	Flange D.66/36,5 (only for gr.2-3)
5	39204400	1	1	1	Gasket
6	40007300	6	6	6	Screw TCEI M6x20
7	Q27160080	1	1	1	Snap ring 180
8	Q27500070	1	1	1	Key 4x5 DIN 6888
9	44000300	1	1	1	Bearing 600945x75x16
10	44001200	1	1	1	Bearing 6010 50x80x16

Ref.	Code	Q.ty			Description
		IE10..A..	IE10..B..	IE13..C..	
11	44102200	2	2	2	Shaft seal 45x60x7
12	49000100	1	1	1	Washer nylon 13x19x1.5
13	49138600	1	1	1	Plug 1/4"
14	Q26622252	1	1	1	Plug TCEI G1/4
15	46004700	1	—	—	Clutch D.152.4 x 2 - 10 daNm - 12Vdc
	46004800	1	—	—	Clutch D.152.4 x 2 - 10 daNm - 24Vdc
	46008400	—	1	—	Clutch D.152.4 x 6 - 10 daNm - 12Vdc
	46008500	—	1	—	Clutch D.152.4 x 6 - 10 daNm - 24Vdc
	46005200	—	—	1	Clutch D.177.8 x 2 - 13 daNm - 12Vdc
	46008200	—	—	1	Clutch D.177.8 x 2 - 13 daNm - 24Vdc
16	26000005	1	—	1	Wire L=65