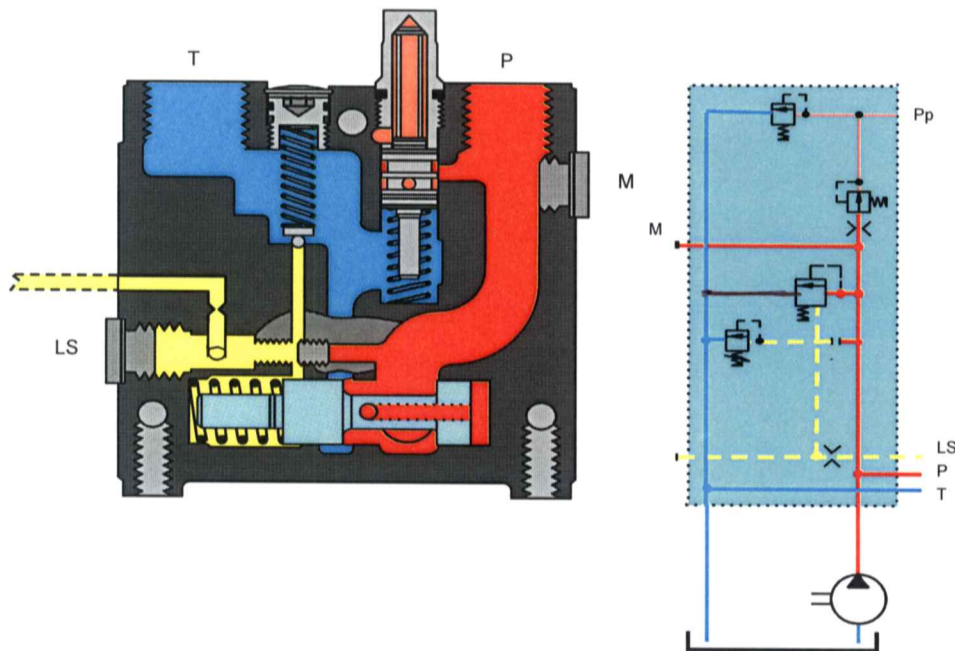
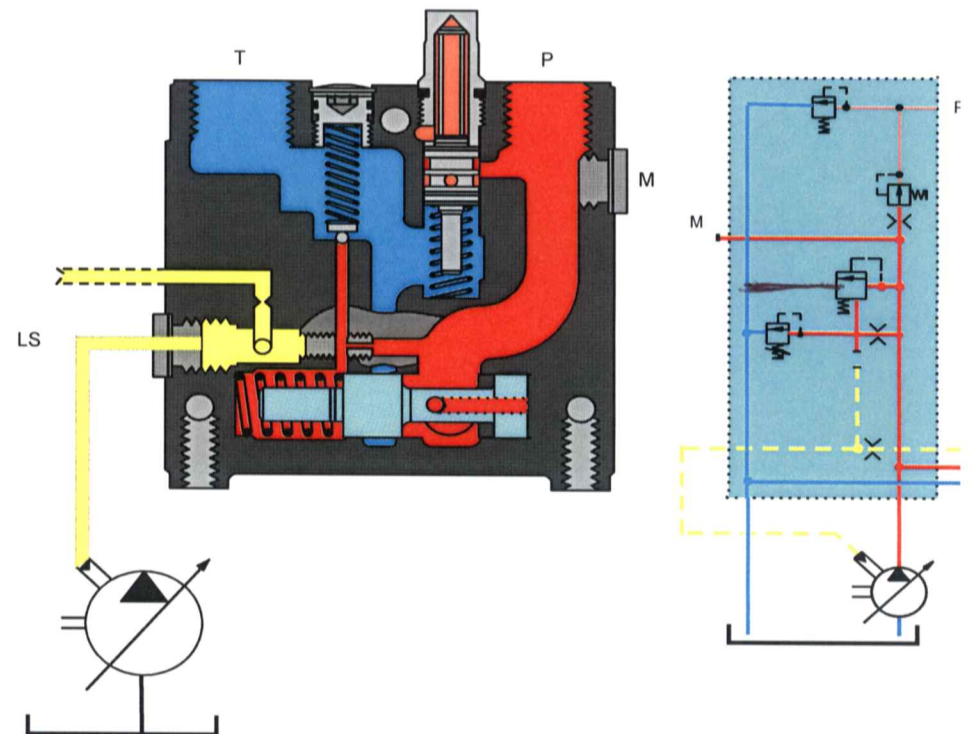


Open Center vs. Closed Center Inlet

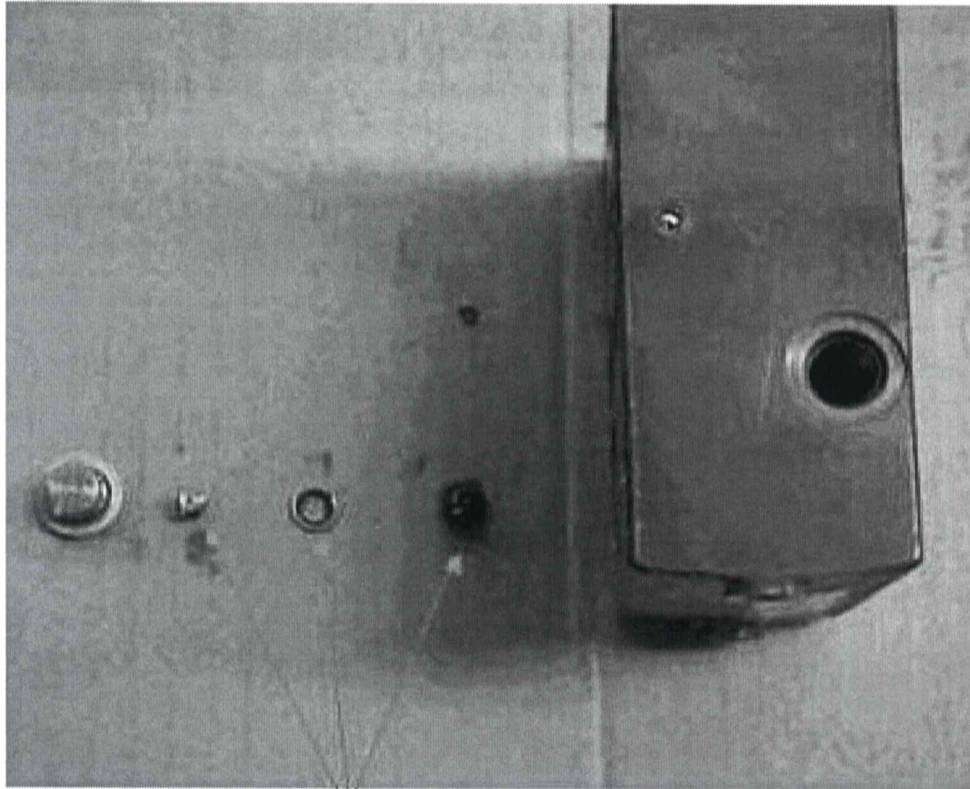
PVP Open Center (Gear pumps)



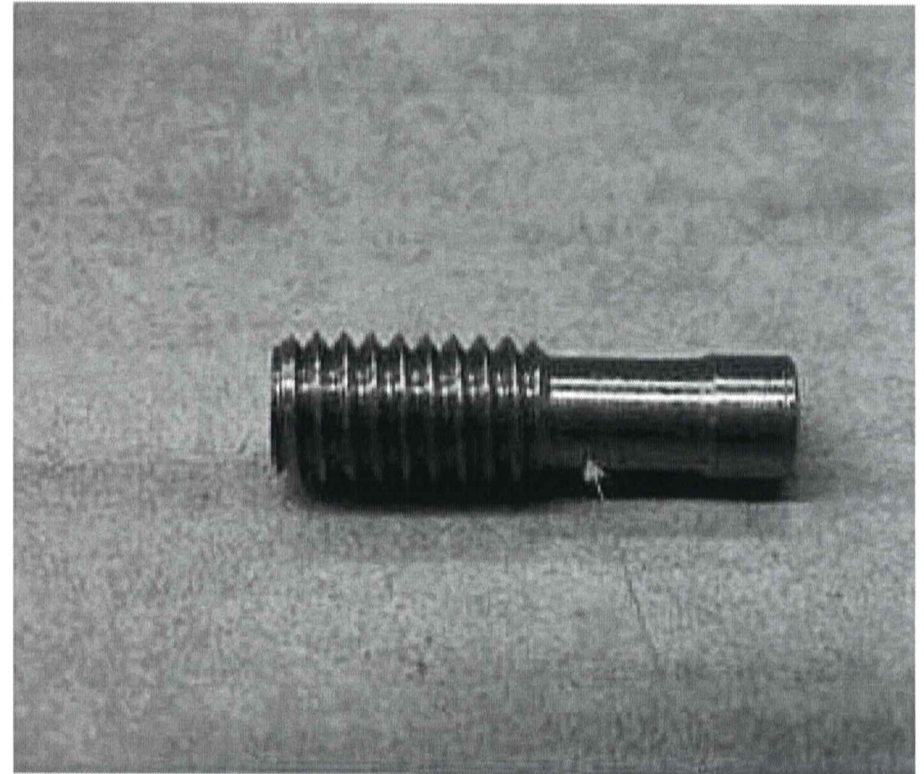
PVP Closed Center (LS or Pressure Comp)



Open Center vs. Closed Center Inlet



Closed center components
can be found below LS plug on all inlets



open center plug

Procedure for conversion of open center inlet to closed and visa/versa

For PVG32 inlet

Applies to all inlet versions offered refer to diagram shown below:

For open center from closed center

1. remove plug #3 identified LS (load sensing port)
2. remove plug and seal #22 and #21 then orifice #6
3. install plug #20
4. reinstall plug #3, conversion is complete

For closed center from open center

1. remove plug #3
2. remove plug #20
3. install orifice #6 then plug and seal #22 and #21
4. reinstall plug #3, conversion is complete

parts required for conversion #20---plug 155L5153 only used for open center
#21---seal 633B9008 only used for closed center
#22---plug 681X1506 only used for closed center
#6--- orifice 155L5389 only used for closed center

